



"The Passion According to St. Matthew," by Johann Sebastian Bach, interpreted for the Capehart Collection by Fred Nagler. This immortal cantata, dedicated like all Bach's works to "the glory of God alone," has become a part of the traditional Lenten devotions. Portrayed is the scene described in these words, "Now the centurion and they that were with him, and were watching Jesus, when they saw the earthquake, and those things that were done, they feared greatly, and said: 'Truly, this was the Son of God.'" The artist has also depicted in his composition the phrase, "And the tombs gave up their dead, and there arose many bodies of the dead."

On a Far Hill

Now it is ended, and the ninth hour. Faces turn aside, in fear and sudden wonderment. The sky trembles. Presentiment moves among the crimson figures. Truly, this was the Son of God!

All the centuries, before and since, look down on this timeless scene. Its mystery remains forever contemporary . . . and music, returning the heart again and again to that far hill, has helped to make it so.

Be it the strong chorale, the opera or string quartet, the power of music to stir deep pools of beauty will be manifest to more people tomorrow, through the golden magic of the Capehart and the Farnsworth.

Then, all the engineering growth of many years will again be directed toward your greater pleasure. There will be phonograph-radios and radios with new precision of tone, record-changers of proved reliability,

and, should you choose, FM . . . or, some day, television. Distinctive cabinets, of many styles and sizes, will offer wide selection. Incomparable Capehart or popular Farnsworth, you will find in every price range the highest possible quality and truest listening delight. Farnsworth Television & Radio Corporation, Fort Wayne 1, Ind.

Portfolios of reproductions of paintings in the Capehart Collection may be secured at nominal cost from your Capehart dealer, or you may write to Fort Wayne 1, Ind.



W. W. AYER & SON

THE CAPEHART

THE FARNSWORTH

Television • Radio • Phonographs

FARNSWORTH TELEVISION & RADIO CORPORATION

C. D.
Record Rec.

Fraser 10

Ray



Raymond Breinin interprets for the Capehart Collection "The Third Tenebrae Service for Wednesday of Holy Week," by the medieval composer François Couperin. Portfolios of reproductions in the Capehart Collection may be secured at nominal cost from your Capehart dealer. Or, if you wish, you may write direct to Capehart Division, Farnsworth Television & Radio Corporation, Fort Wayne 1, Indiana.

Surely, of all events of the Christian Year, the drama of Easter is at once the most poignant and triumphant. The mystery of the Crucifixion, the glory of the Resurrection, singularly move the heart at each retelling. Some of the world's greatest music is based on this majestic theme. Choir, symphony, a clear seraphic voice repeat, for our own time, that history on a lonely hill. You can enjoy this magnificent music today with a new Capehart or a new Farnsworth.

THE CAPEHART



As near perfection as has been the tonal quality of past Capeharts, it is surpassed in the new Capehart. A revolutionary new system so accurately reproduces violin, cello, flute, piano that you should compare the reproduction only with the original instruments. The Capehart record-changer handles records as carefully as the human hand—brings you more than two hours of music without attention. Illustrated is the Panamuse by Capehart, in modern styling—available in bisque or cordovan finish. (As it becomes available, Capehart television will be of the same excellence.) Prices: The Panamuse by Capehart to \$800. The Capehart to \$1750.

THE FARNSWORTH

This new phonograph-radio, EK-102, in richly polished matched woods, walnut or blond, is an instrument of superb tonal quality. Equipped with magnificent twelve-inch speaker. Improved Farnsworth 3-point Suspension Record-Changer handles either 12 ten-inch, or 10 twelve-inch records gently and safely. Other Farnsworth models to suit your taste and budget: phonograph-radios in console and chair-side styles; table models in wood or plastic; smart portables that you can operate on batteries or power line. Farnsworth television sets, including table models will shortly be available in certain cities. Radio and phonograph-radio prices: \$28 to \$400.



FARNSWORTH TELEVISION & RADIO CORPORATION, FORT WAYNE 1, INDIANA

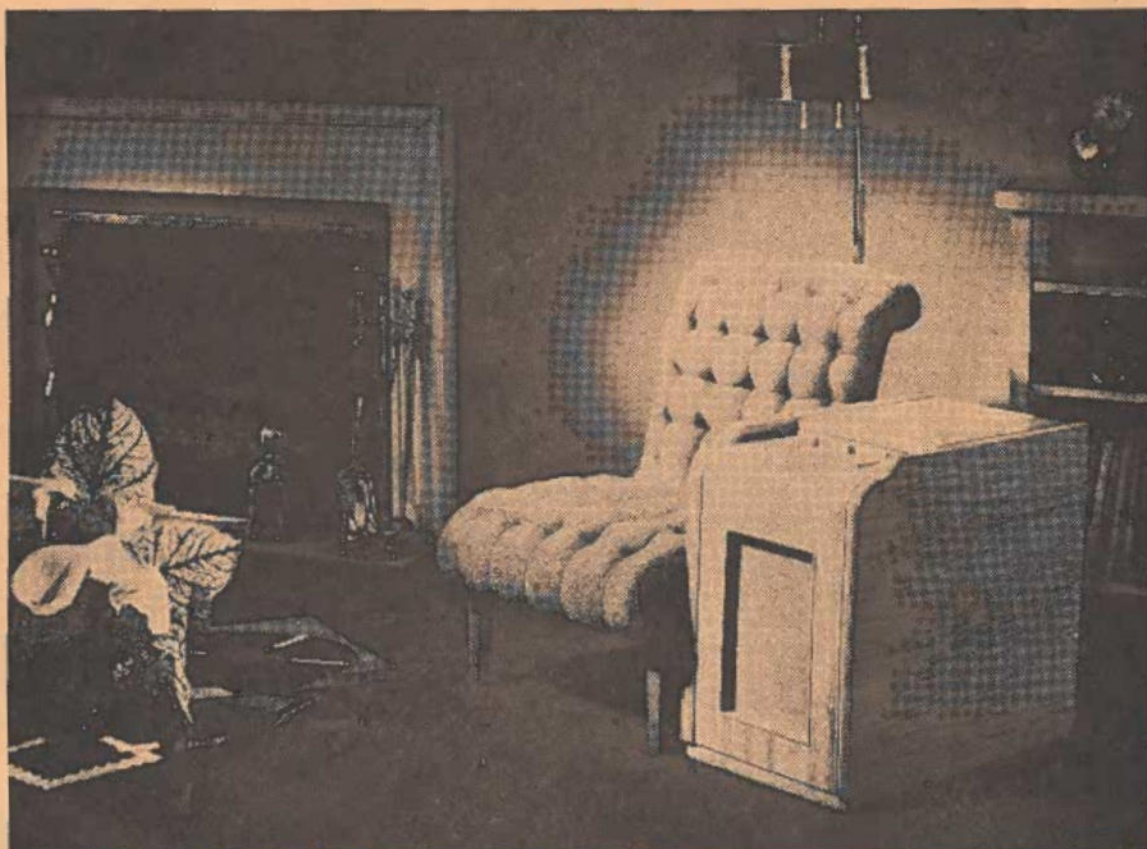
THE FARNSWORTH DEALER WILL PROFIT FROM THIS PICTURE!

Millions of readers will see this powerful full-color, full-page national advertisement next month. They will see and read about the famous Farnsworth Chairside Model EK-264, the set that sells them sitting down. They will identify Farnsworth quality phonograph-radios, table models and television sets. And they will read that the Farnsworth dealer "is one of a limited number carefully selected because of his integrity, his willingness and ability to render proper service."

In this way, Farnsworth backs up every Farnsworth dealer, not only with consistent, attention-getting national advertising for Farnsworth products, but with a strong reference to the reliability of the Farnsworth dealer himself.

Farnsworth Television & Radio Corporation, Fort Wayne 1, Indiana.

Appearing in the March 17 issue of Life magazine



THE FARNSWORTH CHAIRSIDE • Fingertip convenience—all phonograph and radio controls accessible from your easy chair. The compact, modern cabinet provides single record storage—full, faithful sound reproduction. Available in walnut and genuine South American pine vene.

Farnsworth for Fidelity



MODEL EK-102 • Modern, beautifully styled phonograph-radio. Brilliant FM (Frequency Modulation) and AM performance. High fidelity tone. Silent magnetron record changer plays 12 ten-inch or 10 twelve-inch records. Choice of walnut or blond mahogany cabinet.



MODEL ET-801 • Smart, handsome table radio. Luxurious ivory plastic cabinet with contrasting grille in blue, maroon or black. Features brightly illuminated Farnsworth treble dial. Standard and foreign reception. Built-in loop antenna. Set operates on either AC or DC current.



TELEVISION TABLE MODEL • The hit of the New York Television Show, brilliantly engineered by Farnsworth, television's pioneer. Sharp, clear pictures on 16-inch direct view, semi-flat face tube. AM radio also available. Compact, modern cabinet in regular, or blond mahogany.

Whether you enjoy the sparkle and drive of today's popular music, or the flooding richness of the symphony, you'll like the way each is re-created in your home by the new Farnsworths. These truly post-war instruments are endowed with a full, vibrant tone that brings you recorded and broadcast music of surpassing clarity. All incorporate new electronic advances, and the phonograph-radios are equipped with an improved automatic record changer that is quick, quiet and gentle. Cabinets range from smart portables to luxurious phonograph-radios—all combining quality with modest price (ranging from \$125 to \$400). Hear the new Farnsworth today at your nearest Farnsworth dealer. He is one of a limited number carefully selected because of his integrity, his willingness and ability to render proper service. You'll find him friendly and informed, and anxious to help you in every way.

FARNSWORTH TELEVISION & RADIO CORPORATION

Farnsworth
Television • Radio • Phonograph-Radio

Farnsworth Radio and Television Receivers and Transmitters • Aircraft Radio Equipment • Farnsworth Television Tubes • Mobile Communications and Traffic Control Systems for Rail and Highway • The Farnsworth Phonograph-Radio • The Capehart • The Panamuse by Capehart

Mn. Engr. 10

C. D.

Record Book

304/25

7

**TRAIN RADIO TO AID IN OPERATION OF
PERE MARQUETTE'S NEW, STREAMLINED TRAINS**

"By virtue of their efficient and effective performance during the war, the nation's Railroads have won the respect and goodwill of the American people. It is essential that this public esteem be maintained. That is why progressive railroad managements are planning the use of many technical developments capable of making additional contributions to the safety and comfort of rail passenger service, and why the new, streamlined passenger trains which Pere Marquette soon will put into operation are to be equipped with train radio communication systems."



[Signature]

President
Pere Marquette Railway Company

In designing mobile communications facilities for the nation's progressive railroads, Farnsworth has met and solved a number of unique engineering problems.

For example, before train radio could be of maximum service in streamlined train operation, new antenna techniques had to be developed. On the one hand, minimum clearance, far below the seventeen-to-twenty-inch height of the normal VHF railroad antenna, was a prime requisite. On the other hand, because human life, as well as valuable property, is involved in passenger train movements, efficiency and reliability could not be sacrificed.

Faced with this dual objective, Farnsworth engineers set to work. Creative engineering, coupled with careful field testing, resulted in the new *Farnsworth VHF train radio antenna*. Though as efficient as the taller, quarter-wave, ground-plane antenna, heretofore accepted as standard, it is only *eleven inches in height*.

This new antenna is another instance of the careful engineering and thorough research through which Farnsworth railway communications systems guarantee *maximum usefulness and flexibility with simplified, low-cost maintenance*. Farnsworth Television & Radio Corporation, Dept. JOC-5, Fort Wayne 1, Ind.

**FARNSWORTH TELEVISION &
RADIO CORPORATION**

Farnsworth Radio and Television Receivers and Transmitters • Aircraft Radio Equipment • Farnsworth Television Tubes • Halstead Mobile Communications and Traffic Control Systems for Rail and Highway • the Farnsworth Phonograph-Radio • the Capehart • the Panamuse by Capehart

(10) Mr. Frazer
C. D.
Record Book

M. Wallis 1/7

Fry

YES! YOU CAN EXPECT GREAT THINGS FROM *Capehart!*

YES . . . It is perfectly natural that the industry and the public alike should be eager to see and hear the new Capehart. Past events in Capehart's seventeen-year history indicate even greater things from the leader in the art of musical reproduction.

YES . . . Such faith in Capehart supremacy is justified. And, since the best things take time to produce, Capehart has not rushed into the market with throw-back or stop-gap models. There can be no temporizing with quality to save a few weeks of time.

YES . . . The new Capehart and the new Panamuse by Capehart will be worth waiting for. They are endowed with revolutionary new tonal systems, permitting comparison with the original musical instruments or the human voice. Only by such comparison can you realize the character of their brilliant tone—so true that they become the piano, the violin, the human voice. Even the famous Capehart record changer has been improved. Housed in authentic period furniture, the new Capehart and the new Panamuse by Capehart lend grace and distinction to any room setting.

YES . . . Every model has been re-designed and re-engineered to profit by the multiple developments that have occurred since 1942 when the last Capehart was created. Every instrument you receive will be the finest we know how to make.

YES . . . You can expect great things from Capehart. Capehart Division, Farnsworth Television & Radio Corporation, Fort Wayne 1, Indiana.

The **CAPEHART** • The **PANAMUSE** by Capehart

PRODUCTS OF

FARNSWORTH TELEVISION & RADIO CORPORATION

A MAN, A MAID AND THE MINUET



"THE MINUET," an interpretation of the third movement of Haydn's Symphony Number 94 in G Major ("Surprise"), painted for the Capehart Collection by Leon Karp. The painting is done in the romantic mood of the music and depicts two young people executing one of the graceful steps of the minuet. The artist has deftly caught the quality of an 18th Century miniature. Portfolios of reproductions of paintings in the Capehart Collection may be secured at nominal cost from your dealer, or direct from the Capehart Division at Fort Wayne 1, Indiana.



HE curtsies deep as he touches her finger-tips. Violins sing for them in silken notes. The room is perfumed with musk and hyacinth. Great chandeliers light the dancers, gleam on drifting figures of satin and brocade. The melody tells their footsteps, tells their heart-beats . . . tells them that the minuet holds sway!

Be it the minuet, the mazurka, the gavotte or the more popular measures of today, music is the handmaid of dancing. And those who love dancing — or enjoy watching the dance — are particular about the music that accompanies their delighting pastime.

They are particular, too, about how they want music interpreted. That is why the Capehart — "the world's finest instrument for musical reproduction" — gives them such unalloyed pleasure, for it is an interpreter supreme!

Today the Farnsworth Television & Radio Corporation is developing and producing highly scientific electronic instruments for war; but new Capeharts will be available after victory is won.

The doors of your Capehart dealer's showroom are open to you. You are invited to go there to hear the famous minuet movement from Haydn's "Surprise" Symphony as recorded by Koussevitzky and the Boston Symphony Orchestra (Victor M-55) or as recorded by Barlow and the Columbia Broadcasting Symphony Orchestra (Columbia M-363).

Capehart Division, Farnsworth Television & Radio Corporation, Fort Wayne 1, Indiana.

INVEST IN VICTORY — BUY WAR BONDS

Capehart-Panamuse

PRODUCTS OF

FARNSWORTH TELEVISION & RADIO CORPORATION

THE CAPEHART ADAM



Mr. Fraser
C. D. Record Book
SIGNATURE
DAG Y
WRITER
Fay

ALL PICTURES drawn on the
human heart are the colors
of experience. A face departs, a
hope is cancelled, a word cuts with
a sword. Then the dark painting
reflects the dark mood, and fantastic
shapes will not go. So the
composer, young Berlioz, portrayed

THE CAPEHART



The full glory of symphony, quartette or choir is always at the command of owners of the new Capehart phonograph-radio. For electronic research has given this brilliant instrument a revolutionary new tonal system that brings music into the home with a vibrancy and life equaled only by the original instrument or the human voice. Distinctive cabinets, each of authentic period design, are created by skilled furniture craftsmen. (Capehart television, when presented, will be of traditional Capehart excellence.) Prices: The Panamuse by Capehart, \$300 to \$675. The Capehart, \$895 to \$1500

Witches, spirits and weird shapes, symbolizing a sometime confusion of the mind, weave through this interpretation of Berlioz's *Symphonie Fantastique*, painted for the Capehart Collection by Julio de Diego



Portfolios of reproductions in the Capehart Collection may be secured at nominal cost from your Capehart dealer or from Capehart Division, Farnsworth Television & Radio Corp., Fort Wayne 1, Indiana

his own confusions. Yet even in
life's tempestuous moments, music
can be a calm. To shadow, it is light,
to storm, a clearing. To the high
wind that cudgels the trees, it
is a break and a wall. You can enjoy
this music, today, with the new
Capehart and the new Farnsworth.

THE FARNSWORTH



The new Farnsworth radios and phonograph-radios combine quality of performance with modest cost. And in these new instruments, electronic research has evolved a tone so true and full of life that you seem actually present in the concert hall. Cabinets are offered in a wide variety of period and modern designs—table models, chair-side types, portables, and phonograph-radio combinations, some equipped for FM. (Later, Farnsworth television will offer you the same blending of quality and economy.) Convenient purchase terms. Radio and phonograph-radio prices: \$25 to \$350

FARNSWORTH TELEVISION & RADIO CORPORATION

ALL PICTURES drawn on the human heart are the colors of experience. A face departs, a hope is cancelled, a word cuts with a sword. Then the dark painting reflects the dark mood, and fantastic shapes will not go. So the composer, young Berlioz, portrayed

THE CAPEHART



The full glory of symphony, quartette or choir is always at the command of owners of the new Capehart phonograph-radio. For electronic research has given this brilliant instrument a revolutionary new tonal system that brings music into the home with a vibrancy and life equaled only by the original instrument or the human voice. Distinctive cabinets, each of authentic period design, are created by skilled furniture craftsmen. (Capehart television, when presented, will be of traditional Capehart excellence.) Prices: The Panamuse by Capehart, \$300 to \$675. The Capehart, \$895 to \$1500

Witches, spirits and weird shapes, symbolizing a somelime confusion of the mind, weave through this interpretation of Berlioz's Symphonie Fantastique, painted for the Capehart Collection by Julio de Diego



Portfolios of reproductions in the Capehart Collection may be secured at nominal cost from your Capehart dealer, or from Capehart Division, Farnsworth Television & Radio Corp., Fort Wayne 1, Indiana

his own confusions. Yet even in life's tempestuous moments, music can be a calm. To shadow, it is light, to storm, a clearing. To the high wind that cudgels the trees, it is a break and a wall. You can enjoy this music, today, with the new Capehart and the new Farnsworth.

THE FARNSWORTH



The new Farnsworth radios and phonograph-radios combine quality of performance with modest cost. And in these new instruments, electronic research has evolved a tone so true and full of life that you seem actually present in the concert hall. Cabinets are offered in a wide variety of period and modern designs—table models, chair-side types, portables, and phonograph-radio combinations, some equipped for FM. (Later, Farnsworth television will offer you the same blending of quality and economy.) Convenient purchase terms. Radio and phonograph-radio prices: \$25 to \$350

FARNSWORTH TELEVISION & RADIO CORPORATION

H. W. AYER & SON

Mr. Fraz
C. D. Reed

A STONE in the field, a petal dyed
scarlet, a fissure of blue in a
cloud are pictures that paint new
pictures. You look and see not stone
or flower or sky only, but a name
close to your name, a heart close to
your heart. So music heard awakens

THE CAPEHART



Those who are in a position to gratify their desire for the very best in everything, including the world's great music superbly reproduced, will turn naturally to the new Capehart. The revolutionary new tonal system has never been equaled, even by any previous Capehart, for its reproduction of cello, flute, piano or voice can be compared only with the original. A choice of period cabinet designs. The record-changer is still further improved. (Later, Capehart will offer the finest in television receivers.) Prices: The Panamuse by Capehart, \$300 to \$500. The Capehart, \$750 to \$1500

In a Summer's Garden, by Delius, a place of reverie and bitter-sweet memories of things past. Painted for the Capehart Collection by Hobson Pittman.



Portfolios of reproductions at nominal cost from your Capehart dealer, or, Capehart Division, Farnsworth Television & Radio Corp., Ft. Wayne 1, Indiana.

music still unheard. A line of song
can stir a tender dream. A hyacin-
thine voice, white, fragile, clear,
unlooses cords long tightly wound.
The rise and fall of strings, the mel-
ancholy cello, the silver exultation
of a trumpet speak beyond all
speaking. Listen, now, with the new
Capehart or the new Farnsworth.

THE FARNSWORTH



Will it be possible to buy a post-war radio or a phonograph-radio of quality, wearing the name of a distinguished maker, and yet pay no more than a modest price? It will be, indeed, and that instrument will be the new Farnsworth. A wide, popular assortment of cabinet styles—table models for porch and bedrooms; portables for use indoors or outdoors with batteries or power-lines; combination phonograph-radios for recordings that you admire, or your favorite radio programs. (Look to Farnsworth, too, for coming advances in television receivers.) Convenient purchase terms. Prices, \$25 to \$300

FARNSWORTH TELEVISION & RADIO CORPORATION

N. W. AYER & SON