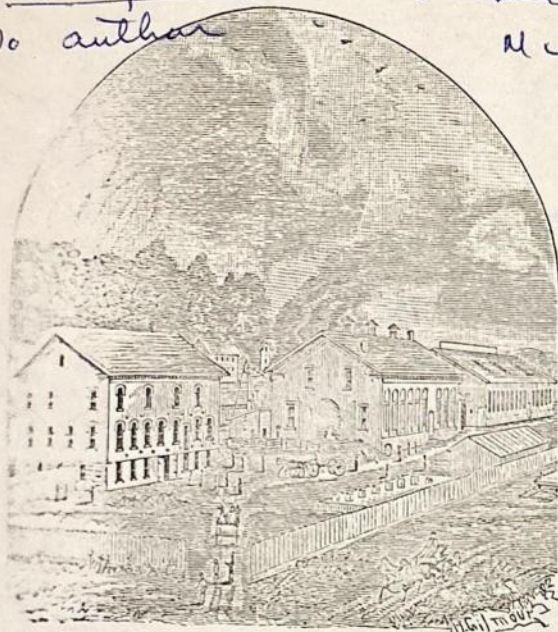


History Lehigh Valley Locksawanna & Lehigh Counties
No author
Munsell & Co
N.Y. 1880



WYOMING VALLEY MANUFACTURING COMPANY'S BUILDINGS.

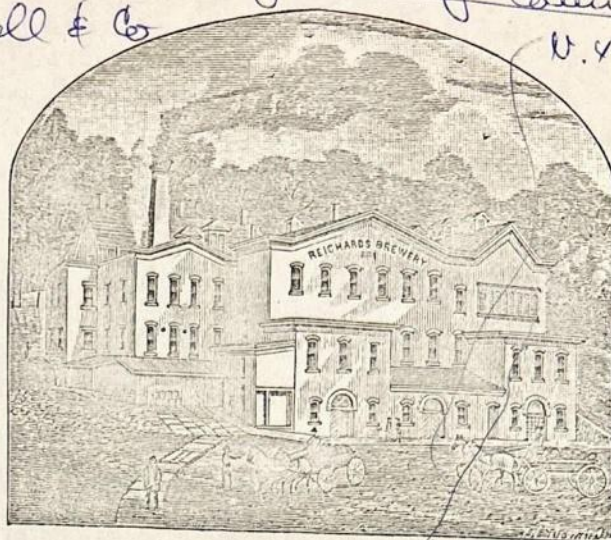
The history of the Wyoming Valley Manufacturing Company is given on page 216. The buildings of this corporation, an illustration representing which is here given, are located between Hazle avenue and Main street, the North Branch Canal and Lehigh Valley Railroad being near on the north, and the Lehigh and Susquehanna Railroad on the south, with a switch or branch connecting by which iron, coal and other heavy material are received, a branch passing directly through the machine shop, enabling the loading, by means of cranes, of heavy machinery on transportation cars.

The building in the foreground is a pattern shop, of brick, 75 by 42 feet. Next is the foundry, also of brick, 104 by 54 feet, with leanto of 12 feet. The farthest building shown is the machine shop, a frame structure 165 by 60 feet, with leanto for boilers and engine room. In the rear are the smith shop, 60 by 28 feet, and the boiler shop 40 by 27 feet, both of which are temporary buildings and not shown in the engraving.

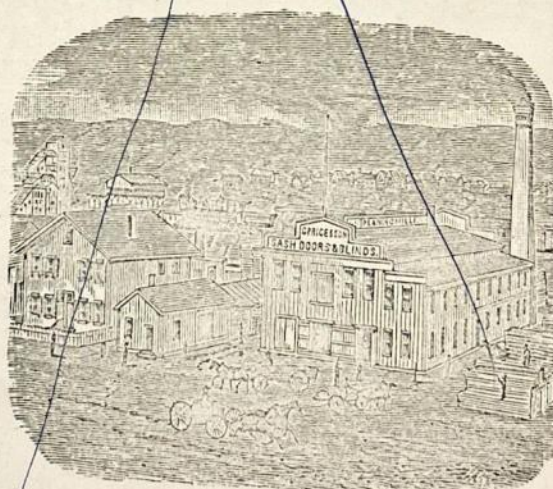
The tools in the machine shop are of modern design, and capable of turning out work of the best character. The narrow-gauge and mine locomotives and hoisting and mine machinery manufactured by this company are extensively known and widely used.

REICHARD & SON'S STEAM BREWERY

an outgrowth of an old brewery at the corner of River and Union streets, built by one Ingham. From him it passed into the hands of John Reichard in 1834. At that time and up to 1851 strong beer, ale and porter were the only articles manufactured. In 1850 the old brewery was torn down, and a new one built immediately in the



rear. In 1851 lager beer was first made. It has from that time constantly increased in use, until the manufacture of ale, porter, etc., has almost ceased. In 1870 the present brewery was built, on Water street, near the county prison, in order to give such facilities as a modern brewery demanded. It was furnished with all the appliances that belong to a first class establishment. In 1874 John Reichard took into the firm George N. Reichard and Heinrich Stauff, under the name of Reichards & Stauff. This firm lasted until the fall of 1878, when Mr. Stauff retired from the firm. The two remaining partners have since carried on the business as Reichard & Son. The brewery is supplied with all modern machinery, and patent ice-houses and vaults; uses the Laurel Run water—the purest that can be had—and has a capacity of 25,000 barrels per year. There is a bottling establishment connected with it, where the firm does its own bottling.



PRICE & SON'S

planing mill, and sash, door and blind factory, of which an account is given on page 216, is the establishment shown in the above cut.

see Vulcan file for history noted p. 216

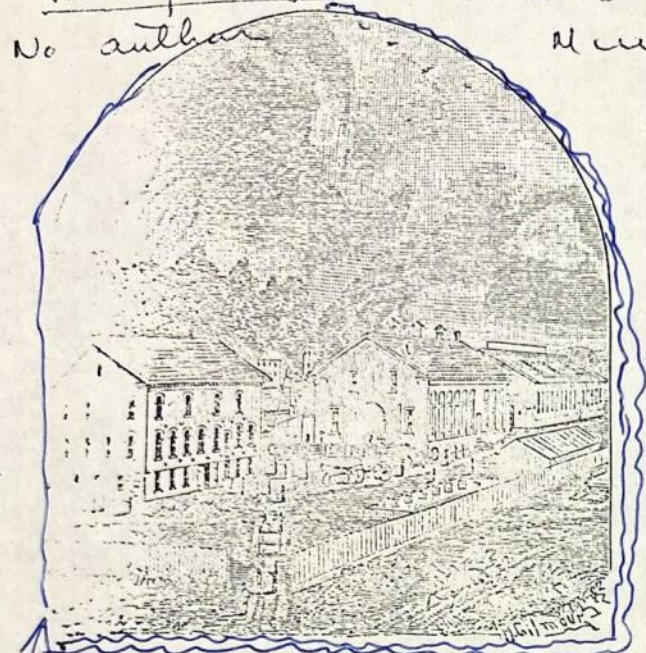
History Luzerne Lehigh Valley & Wyoming Counties

No author

Munsell & Co

N.Y. 1880

Need 4 X 5 Neg plus 2 4 X 5" prints Best quality for repro



WYOMING VALLEY MANUFACTURING COMPANY'S BUILDINGS.

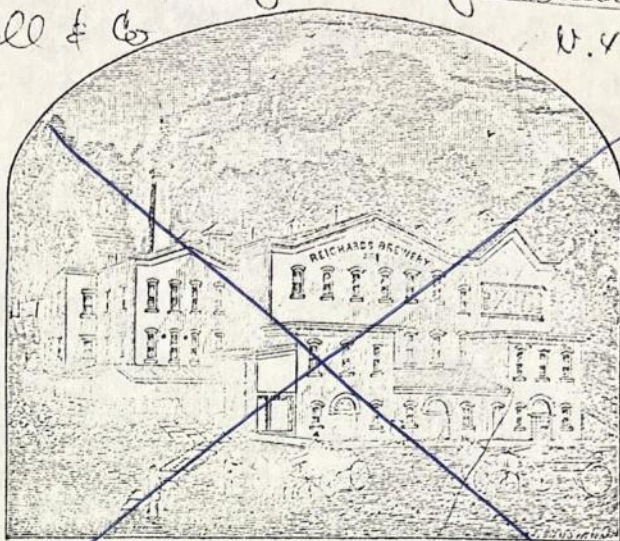
The history of the Wyoming Valley Manufacturing Company is given on page 216. The buildings of this location, an illustration representing which is here shown, are located between Hazle avenue and Main street, the North Branch Canal and Lehigh Valley Railroad being on the north, and the Lehigh and Susquehanna Railroad on the south, with a switch or branch connecting by which iron, coal and other heavy material are moved, a branch passing directly through the machine shop, enabling the loading, by means of cranes, of heavy machinery on transportation cars.

The building in the foreground is a pattern shop, of brick, 75 by 42 feet. Next is the foundry, also of brick, 104 by 54 feet, with leanto of 12 feet. The farthest building shown is the machine shop, a frame structure 165 by 60 feet, with leanto for boilers and engine room. In the rear are the smith shop, 60 by 28 feet, and the boiler shop, 40 by 27 feet, both of which are temporary buildings and not shown in the engraving.

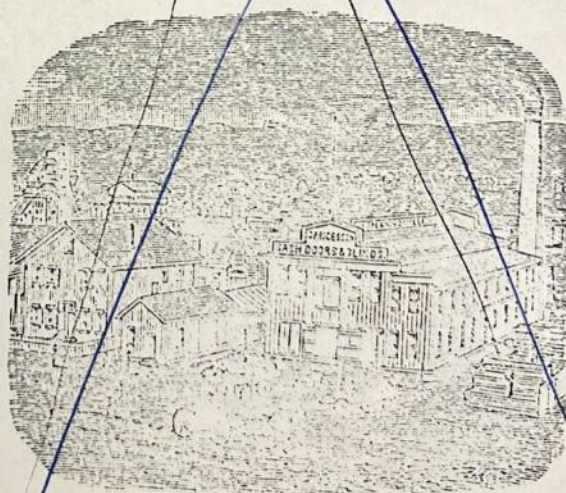
The tools in the machine shop are of modern design, capable of turning out work of the best character. Arrow-gauge and mine locomotives and hoisting machinery manufactured by this company are widely known and widely used.

~~REICHARD & SON'S STEAM BREWERY~~

~~Growth of an old brewery at the corner of River and Main streets, built by one Ingham. From him it came into the hands of John Reichard in 1834. At that time and up to 1851 strong beer, ale and porter were articles manufactured. In 1850 the old brewery was torn down, and a new one built immediately in the~~



rear. In 1851 lager beer was first made. It has from that time constantly increased in use, until the manufacture of ale, porter, etc., has almost ceased. In 1870 the present brewery was built, on Water street, near the county prison, in order to give such facilities as a modern brewery demanded. It was furnished with all the appliances that belong to a first class establishment. In 1874 John Reichard took into the firm George N. Reichard and Heinrich Stauff, under the name of Reichards & Stauff. This firm lasted until the fall of 1878, when Mr. Stauff retired from the firm. The two remaining partners have since carried on the business as Reichard & Son. The brewery is supplied with all modern machinery, and patent ice-houses and vaults; uses the Laurel Run water—the purest that can be had—and has a capacity of 25,000 barrels per year. There is a bottling establishment connected with it, where the firm does its own bottling.



playing mill, and sash, door and blind factory, of which an account is given on page 216, is the establishment shown in the above cut.

* John H. White,
For: Div. of Transportation

COMPANY OF THE STATE OF
WYOMING
THE WYOMING VALLEY MANUFACTURING CO.

General

General

General

General

General

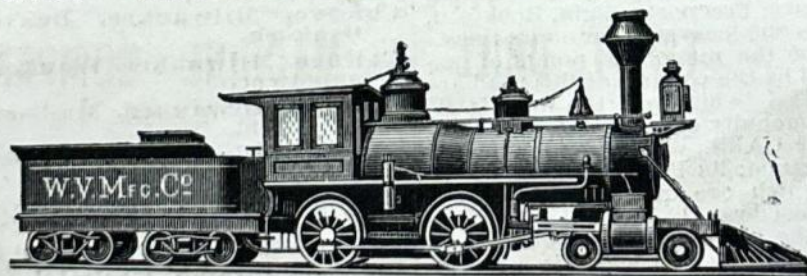
General

General

General

General

WYOMING VALLEY MANUFACTURING CO.,



Builders of Narrow-Gauge and Mine Locomotives, Hoisting and Mining
Machinery, WILKESBARRE, PA

RR 5
1884

WYOMING VALLEY MANUFACTURING CO.,



Builders of Narrow-Gauge and Mine Locomotives, Hoisting and Mining Machinery, WILKESBARRE, PA.

WYOMING VALLEY MANUFACTURING CO.,



Builders of Narrow-Gauge and Mine Locomotives, Hoisting and Mining Machinery, WILKESBARRE, PA.

WYOMING VALLEY MANUFACTURING COMPANY,

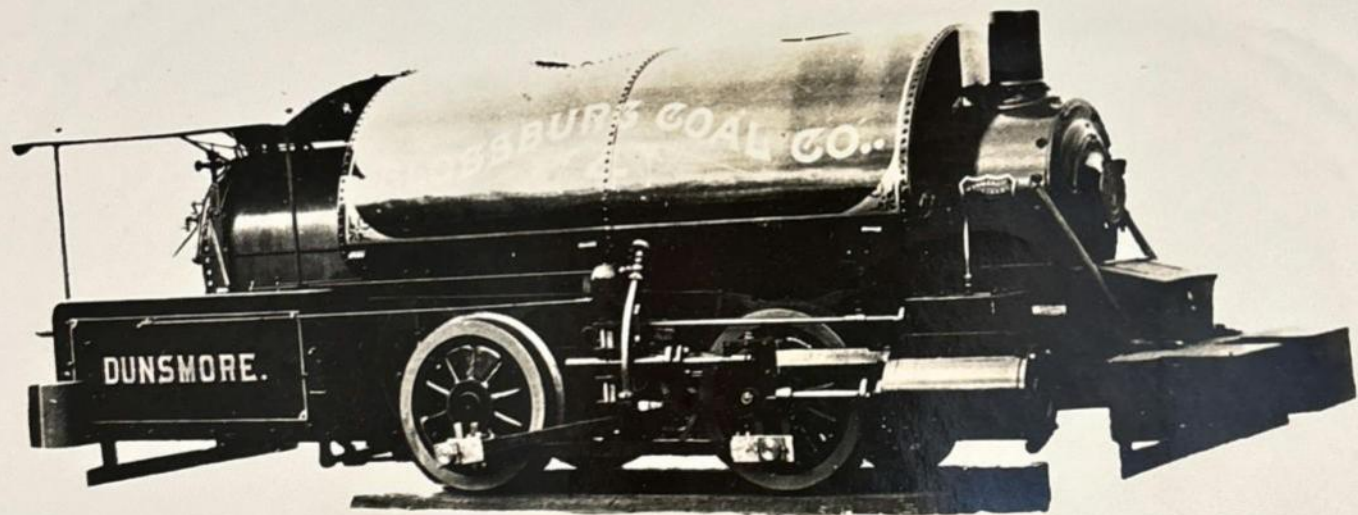


**Builders of Narrow-Gauge and Mine Locomotives, Hoisting and Mining Machinery,
WILKESBARRE, PA.**

WYOMING VALLEY MANUFACTURING CO.,



**Builders of Narrow-Gauge and Mine Locomotives, Hoisting and Mining Machinery,
WILKESBARRE, PA.**



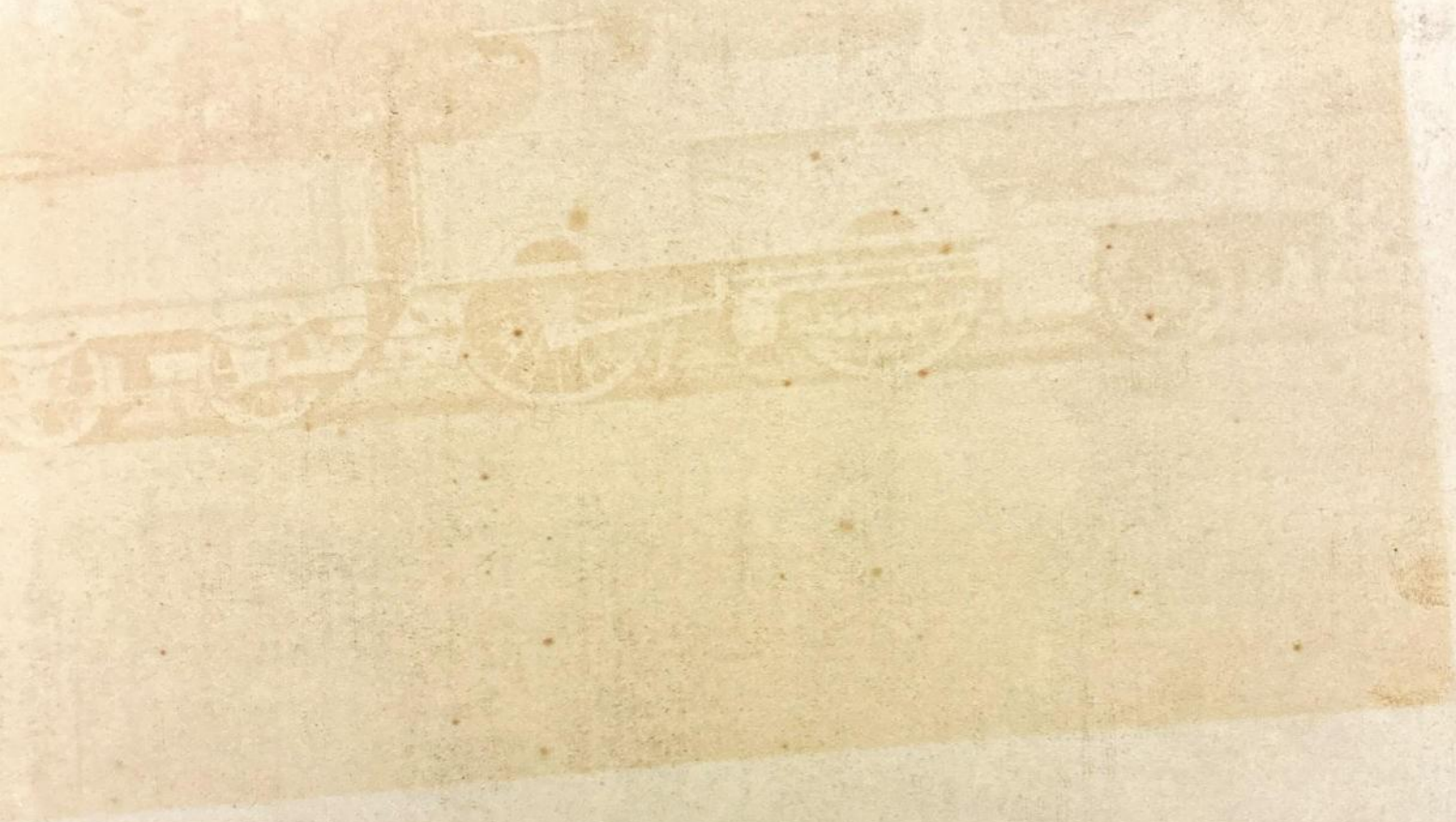
Built by Wyoming Valley Lf Co.
Wilkes-Barre, Pa.

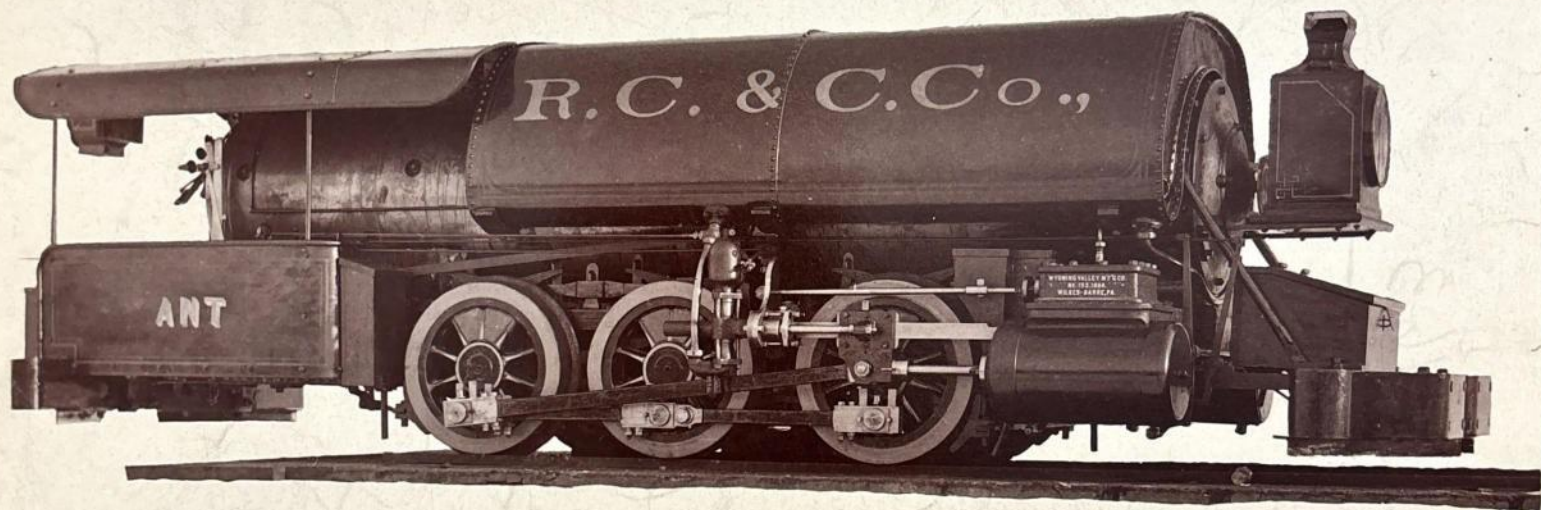
FROM
THOMAS NORRELL
SILVER SPRING
MARYLAND
1950



*59003

CAT# 181 045





59004

CAT. # 181043

cat. no. 181,043

Recent Locos 1883

18

BARROWS & COMPANY,

RAILWAY COMMISSION MERCHANTS AND CONTRACTORS FOR THE SUPPLY OF

RAILWAY MATERIALS, EQUIPMENT AND SUPPLIES

OF EVERY DESCRIPTION.

ROLLING STOCK FURNISHED PROMPTLY

FOR CASH OR ON CAR TRUST.

LIGHT RAILWAY CONTRACTS A SPECIALTY.

OFFICE: 64 AND 66 BROADWAY, - - - - - NEW YORK.

WYOMING VALLEY MANUFACTURING CO.,

WILKESBARRE, PA.



BUILDERS OF

Narrow Gauge and Mine Locomotives,

HOISTING AND MINING MACHINERY.

J. A. EMERICK.

ESTABLISHED 1853.

HOWARD EVANS

J. A. EMERICK & CO.,

MANUFACTURERS,

1056 to 1076 BEACH STREET,

PHILADELPHIA,

PA.

We make and deal in every kind of Tools and Material used in a Foundry, as

FACINGS.

Bituminous or Sea Coal,
Charcoal, Oak,
Anthracite,
X No. 1.—XX,
Keystone,
Diamond,
Soapstone,
Ger. Lead,
Ceylon Lead, etc.,

MOULDING SAND.

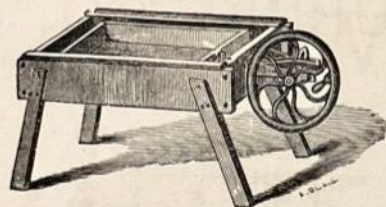
Albany, Crescent & Waterford,
Burlington Island,
Lumberton, Nos. 1, 2 and 3,
Centerton,
Tulleytown
Pennsylvania Fine,
Philadelphia Brass,
Fire Sand, Kaolin,
Ground Sand, etc.,

CORE MATERIAL.

Hay Rope Twister,
Salt Hay for Rope,
Sour Flour,
Common Molasses,
Brushes, Nails,
Rosin, Blacking,
Stove Putty
Core Sand,
Anchor Irons, etc.,

SUPPLIES.

Riddles—Iron, Brass or Galva nized
Ames' Moulders' Shovels, etc.
Sand Sifters, Kirk's Flux,
Casting Brushes, Patent,
Hard and Soft Dusters,
Crucibles, Fire Brick,
Moulders' Tools,
Bellows, Pattern Shells.
Sprinkling Pots, etc.



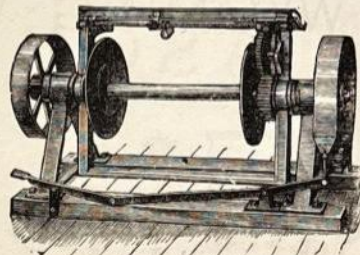
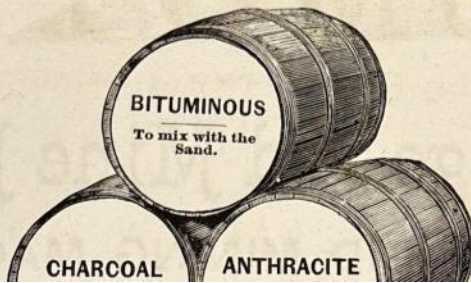
SAND SIFTING MACHINE.



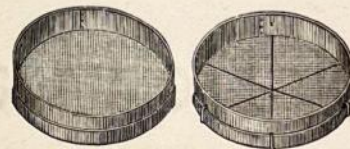
BELLOWS FOR DISTRIBUTING FACING.



WE MANUFACTURE OUR OWN
FACINGS.
LET US SEND PRICES.



HAY ROPE TWISTER.



FOUNDRY RIDDLE—Steel or Brass.

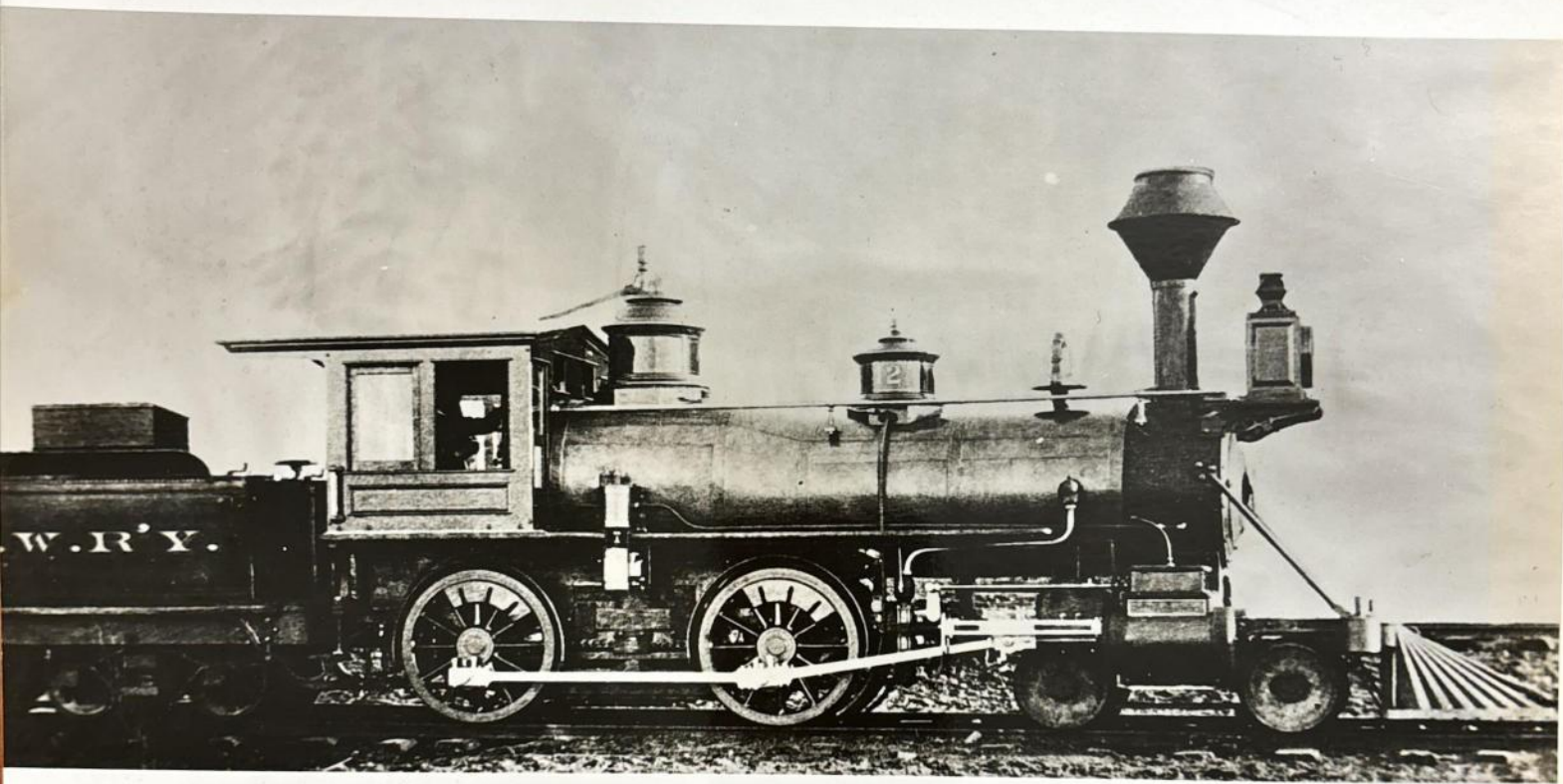


STATION OF THE PORT HURON & NORTHWESTERN R.R. AT PORT HURON, MICHIGAN
C.1880

Port Huron & N.W.Ry. c.1882 or later
Court Street Depot, Port Huron, Michigan
Engine #13 built 1882? by Wyoming Valley Machine Works, Penn'a

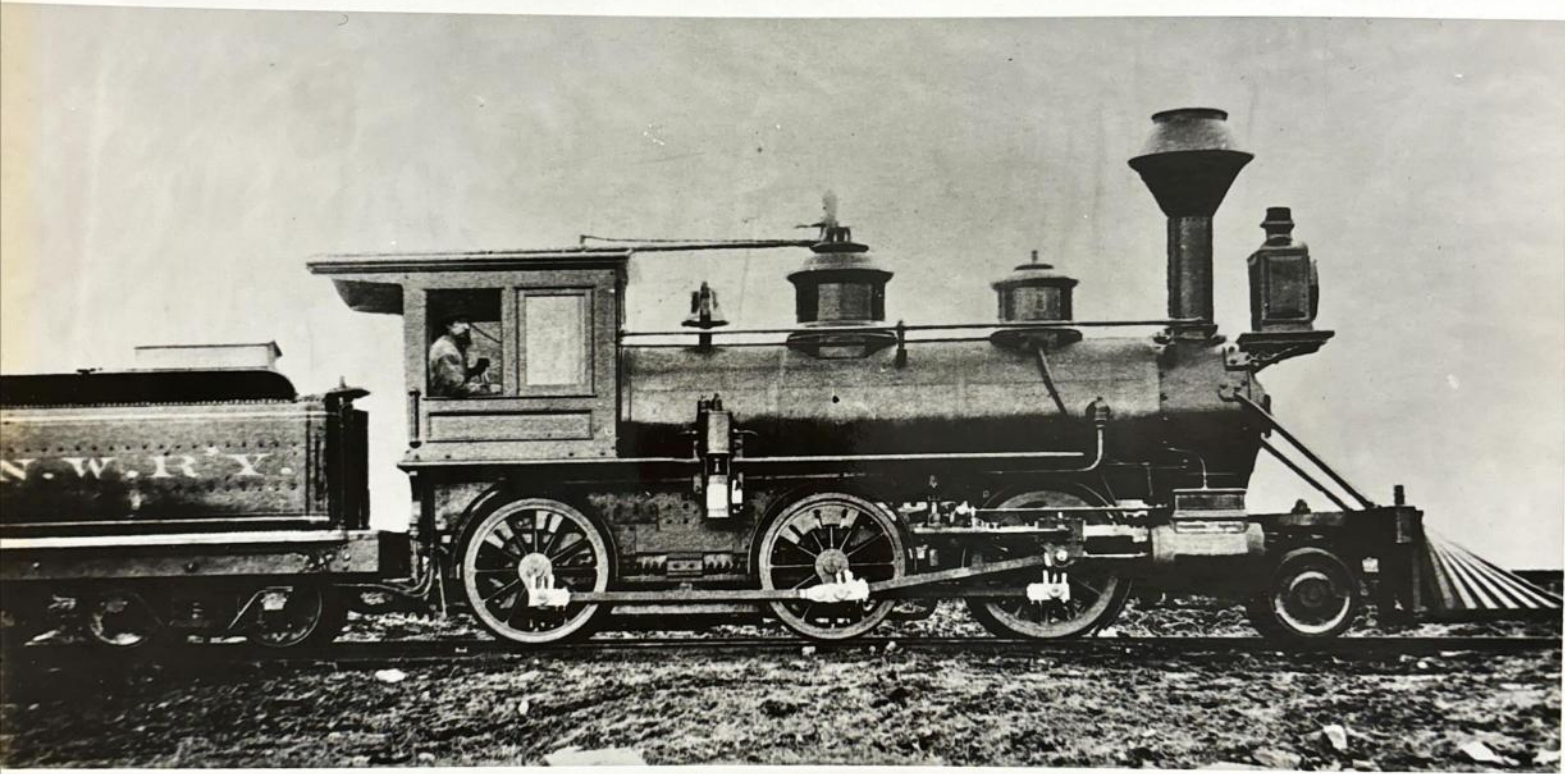
Richard D. Rautio
1245 Pursell Ave.
Dayton, Ohio 45420

NOV. 2 - 1981



Wyoming Valley Machine Works c/n 13 1881
12x16" cyl.; 36" gauge
Port Huron & Northwestern Ry. #12

Copied from C.T.Stoner print
(deceased now)



Wyoming Valley Machine Works c/n 117 1881
12x18" cyl.; 36" gauge
Port Huron & Northwestern Ry. #10

Copied from C.T.Stoner print
(now deceased)

Richard D. Rautio

1245 Pursell Ave.

Dayton, Ohio 45420

August 1981

Wyoming Valley Manufacturing Company, Wilkesbarre, Pennsylvania
(Wyoming Valley Machine Works)

c/n

1
2
3
4
5
6
7
8
9
10
11 12x18
12 " ✓
1881 13 12x16 4-4-0 Port Huron & Northwestern Ry. #12; builder photo
14 12x18
15
1882 116 12x18 4-4-0 Warren & Farnsworth R.R. #6 (new?); to Tionesta Valley Ry. #4; to Ed Campbell early 1900's (Campbell Lumber Co.)
1881 117 12x18 2-6-0 Port Huron & Northwestern Ry. #10; to Jefferson Coal Co., Pennsylvania; builder photo
118 Port Huron & Northwestern Ry. # ; to "ditto"
119 " " & " " # ; ditto
1882 120 12x18 4-4-0 Warren & Farnsworth R.R. #5 (new?); to Tionesta Valley Ry. #5

Jack, Any info on these?
Rich

Port Huron & Northwestern Railway Co. 1878-1889 (became F.& P.M.)
(Jan. 1st 1881- 4 locos; 1881-1888- 11 to 13 locos)

1st — ?1 2-4-0 P.B. & Co. 323 12/78 8x16-36 10 Ton; to Cody & Moore, Lake City
2nd — ?2 2-4-0 H.K.P. & Co. 329 4/79 " -40
4th? — ?3 2-4-0 " 384 8/80 11x16-44
?4 2-4-0 " 447 9/81 " -48
?5 2-4-0 " 448 " " "
3rd? — (???) 6 4-4-0 W.V.M.W. 1879
7
8
9
B. Photo 10 2-6-0 " 117 1881 12x18; to Jefferson Coal Co., Pennsylvania
11
B. Photo 12 4-4-0 " 13 1881 12x16-50 20 Ton
Photo w/Train 13 4-4-0 "

About ten n.g. locos were renumbered into the F.& P.M. (110 series)
Four engines (1 Por., 3 WV) became F.& P.M. and later Pere Marquette:
110/"B", 114/"A", 115/"D", 116/"C" (last one was the Porter).

LIGHT LOCOMOTIVES.